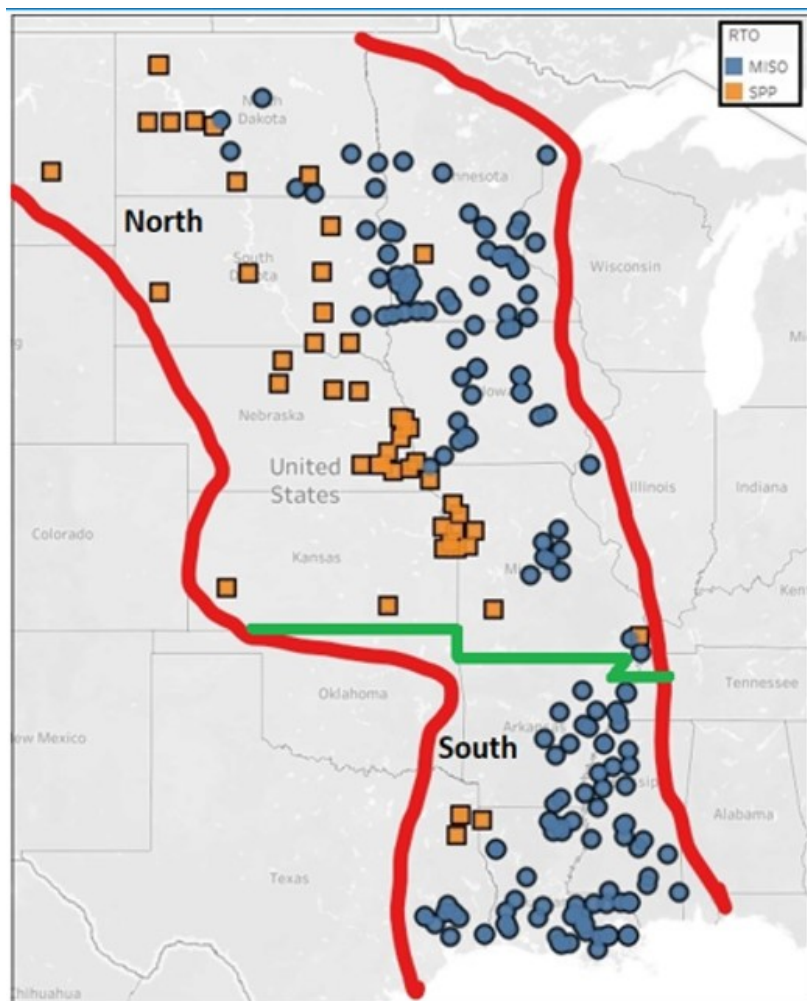


JTIQ FRAMEWORK

GENERATORS THAT CONNECT WITHIN THE JTIQ AREA WILL SPLIT THE COSTS OF THE JTIQ PORTFOLIO



- Projects will be determined to be in or out of the JTIQ Participation Group based on their DFAX impact to the MISO-SPP seam and MW impact to one or more JTIQ projects.
- Interconnection requests in the MISO South and SPP DISIS Groups 4 and 5 that do not meet the criteria for inclusion in the JTIQ Participation Group will be evaluated for potential Affected System (AFS) coordination based on the existing rules.

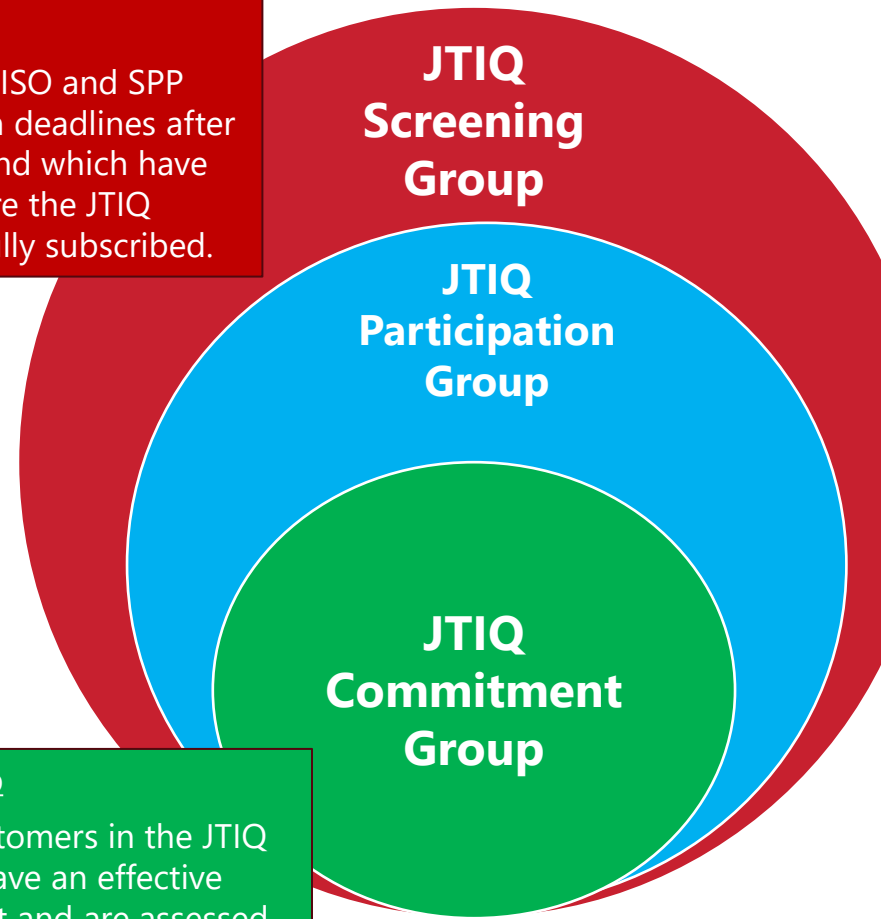
IDENTIFICATION OF INTERCONNECTION CUSTOMERS FOR JTIQ

JTIQ Screening Group

Interconnection requests in MISO and SPP study clusters with application deadlines after a JTIQ Portfolio is approved and which have not commenced studies before the JTIQ Portfolio has been declared fully subscribed.

JTIQ Commitment Group

Those interconnection customers in the JTIQ Participation Group that have an effective interconnection agreement and are assessed the JTIQ Generator Charge.



JTIQ Participation Group

- An interconnection request in the Screening Group that meets following criteria
 - greater than 5% distribution factor on one or more facilities in the Affected System RTO and
 - greater than 1 MW (positive) impact on at least one JTIQ Network upgrade
- Each RTO will monitor its interconnection queue and report to the other RTO the number of MW that have met the threshold for inclusion in the JTIQ Participation Group and the total number of MW that have moved into a Commitment Group.

INTERCONNECTION STUDIES WILL BE EXPANDED TO CAPTURE ANY LOCALIZED IMPACTS ON THE OTHER RTO'S SYSTEM



Members of the JTIQ Participation Group will not be included in a standard Affected System study except as specifically provided in the JOA



To capture the localized constraints of interconnections close to the seam, the interconnection studies will be extended beyond the RTO boundary for a limited electrical distance



The cost of any upgrades identified by that localized study will be directly assigned to the generator interconnection customer

DPP AND DISIS STUDIES WILL BE EXPANDED TO CAPTURE LOCALIZED IMPACTS ON AFFECTED SYSTEM



Members of the JTIQ Participation Group will not be included in a traditional Affected System study except as specifically provided in the JOA



To capture the localized injection constraints of Interconnection requests connecting close to seam, the DPP and DISIS studies will be extended beyond the RTO boundary

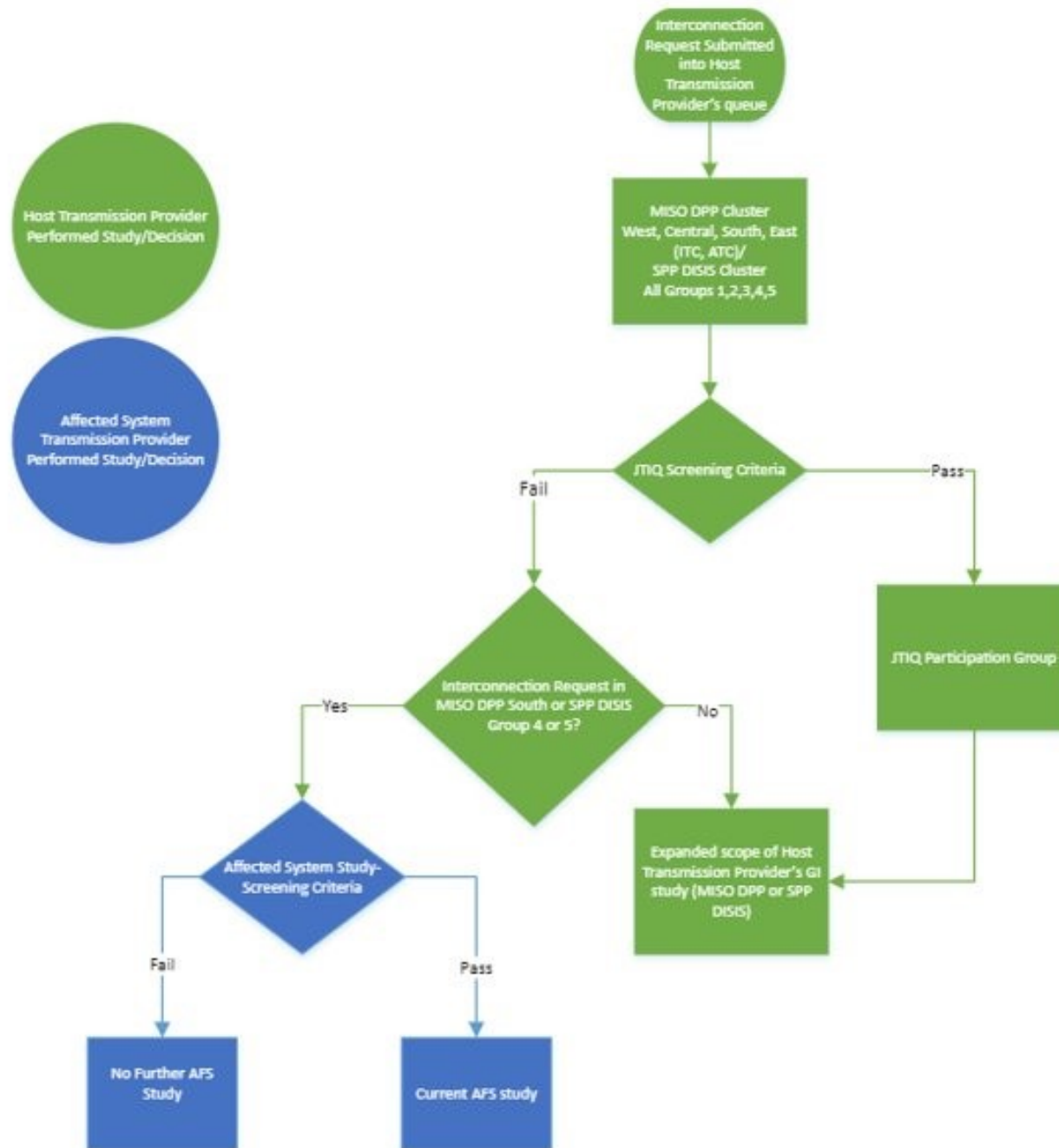
Five substations for under 200kV facilities,
Two substations for 200-300 kV facilities, and
One substation for facilities greater than 300 kV



Greater than 10% distribution factor on the facilities in the Affected System RTO

This DFAX mirrors the criteria that MISO and SPP would use if it was performing the affected systems study

DFAX screening for AFS is currently under system intact and contingency conditions (using contingencies from the respective DISIS analysis), the same approach is intended for JTIQ



BENEFITS OF JTIQ REPLACING AFS PROCESS

Improves cost certainty
for GI requests in MISO and
SPP

- Provides GI customers affected system cost at the start of DPP or DISIS
- Eliminates unknown AFS Network Upgrades
- Eliminates AFS study cost

Improves timing certainty
for GI requests in MISO and
SPP

- Concludes study process for requests with the completion of DPP or DISIS without having to wait for separate AFS study results
- Eliminates timing delays on AFS study coordination

**Enhances alignment with
FERC** interconnection
initiatives

- Consistent with Commission interest in more efficient review of interconnection requests and identification of larger facilities to serve multiple customers

**Optimizes Network
Upgrades** along the seams

- Identifies optimized Network Upgrades that address larger/longer-term system needs across seams and across study clusters as compared to individual MISO+SPP AFS processes

COST ALLOCATION OVERVIEW

DOE GRIP funding is a key input to cost allocation.

- Funding will be used to offset what would have been the load commitment first, then apply to the rest of the portfolio.

The result is 100% of costs for the JTIQ portfolio not covered by the DOE GRIP funding will be allocated to Interconnection Customers.

- This follows SPP's existing cost allocation methodology for GIPs.

All O&M will be borne by the constructing zone.

- Treatment of O&M within SPP will be recovered in accordance with recovery mechanisms for the constructing zone.

Backstop will be constructing region load

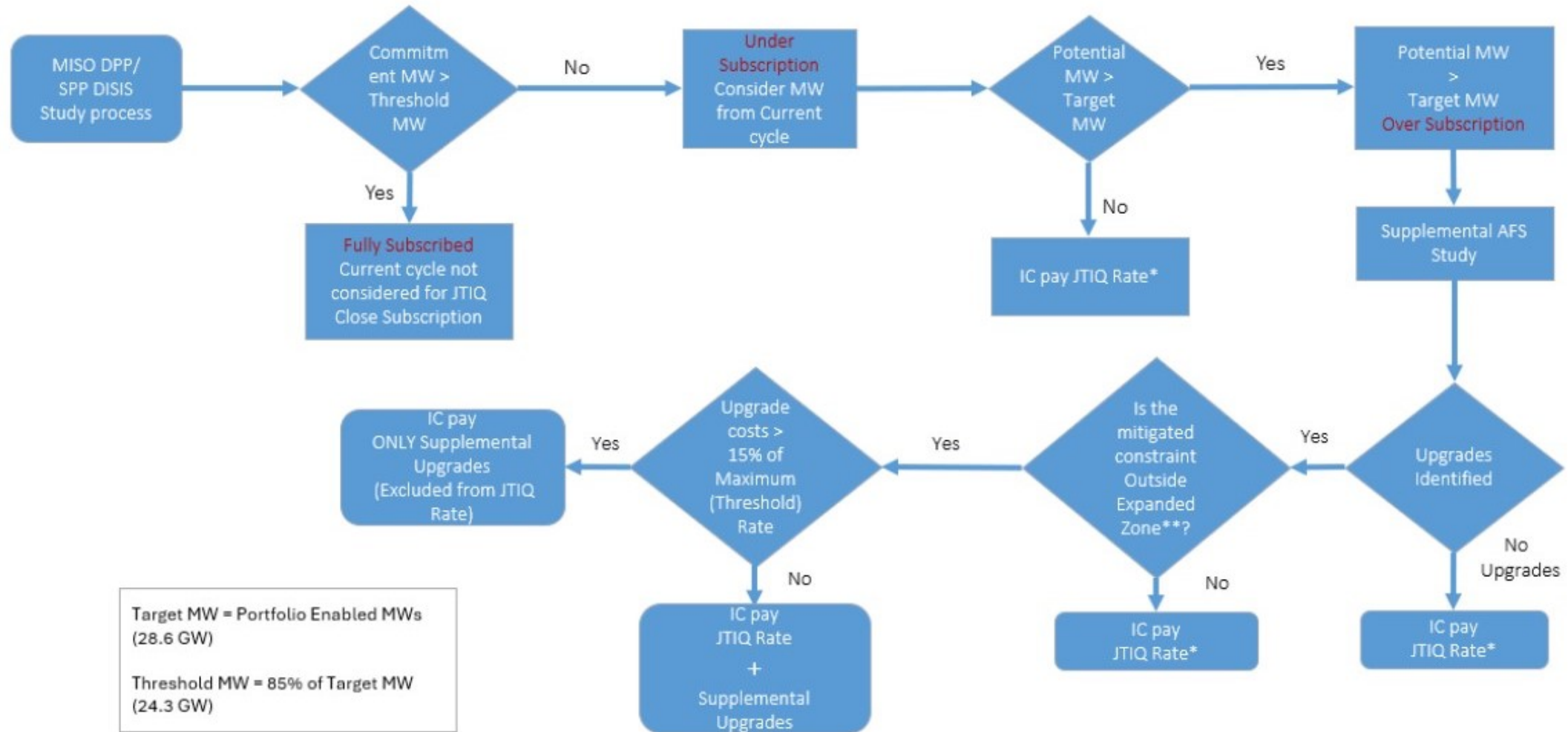
- Backstop for JTIQ projects constructed in SPP will be SPP's footprint. Same for MISO.

Entitlements will be allocated to the constructing region

GENERATOR SUBSCRIPTION FLOWCHART DEFINED TERMS

- **Target MW** – Estimated new MW enabled by the JTIQ Portfolio.
Set to 28.6 GW
- **Threshold MW** – 85% of Target MW – i.e., 24.31 GW
- **Commitment MW**– Total number of MW expected in GIAs with a JTIQ commitment based on data from study clusters whose first decision point deadlines have passed plus MW already in existing JTIQ Commitment Group(s)
- **Potential MW** – Total number of MW expected in GIAs with a JTIQ commitment based on data from study clusters whose first decision point deadlines have passed and MW already in existing JTIQ Commitment Group(s), plus potential MW commitments from current study cluster

OVERVIEW OF PROCESS FOR SUBSCRIPTION



* JTIQ Rate includes potential Expanded scope upgrades

** Expanded Zone – The substation levels defined in the Expanded Study scope

JTIQ FINANCIAL SECURITY

Financial security for JTIQ costs allocated to generator interconnection customers will be required.

JTIQ-related funds collected from generator interconnection customers after execution of the GIA will not be refundable.

- Regardless of why a project is withdrawn from contributing to the JTIQ, such withdrawal would invariably shift some cost to other parties.

ILTCRS UNDER THE SPP TARIFF



Candidate ILTCRs can be awarded under Sec. IV of Attachment Z2 to provide compensation to Upgrade Sponsors that incur directly assigned costs for Network Upgrades



JTIQ Tariff changes include ability of both MISO and SPP GI customers to be awarded candidate ILTCRs for the GI customer's cost share of the ATC created by each JTIQ Upgrade located on the SPP transmission system

JTIQ REVISION REQUEST

- RR620 Joint Targeted Interconnection Queue (JTIQ)
 - <https://www.spp.org/Documents/71171/RR620.zip>
- Link to Recording of JTIQ RR Kickoff Meeting 20240226:
 - Recording link:
<https://mysppmeeting.webex.com/mysppmeeting/ldr.php?RCID=60115e1d7920b4dfa96e8208bba9e07c>
 - Password: Ssf33Fxa